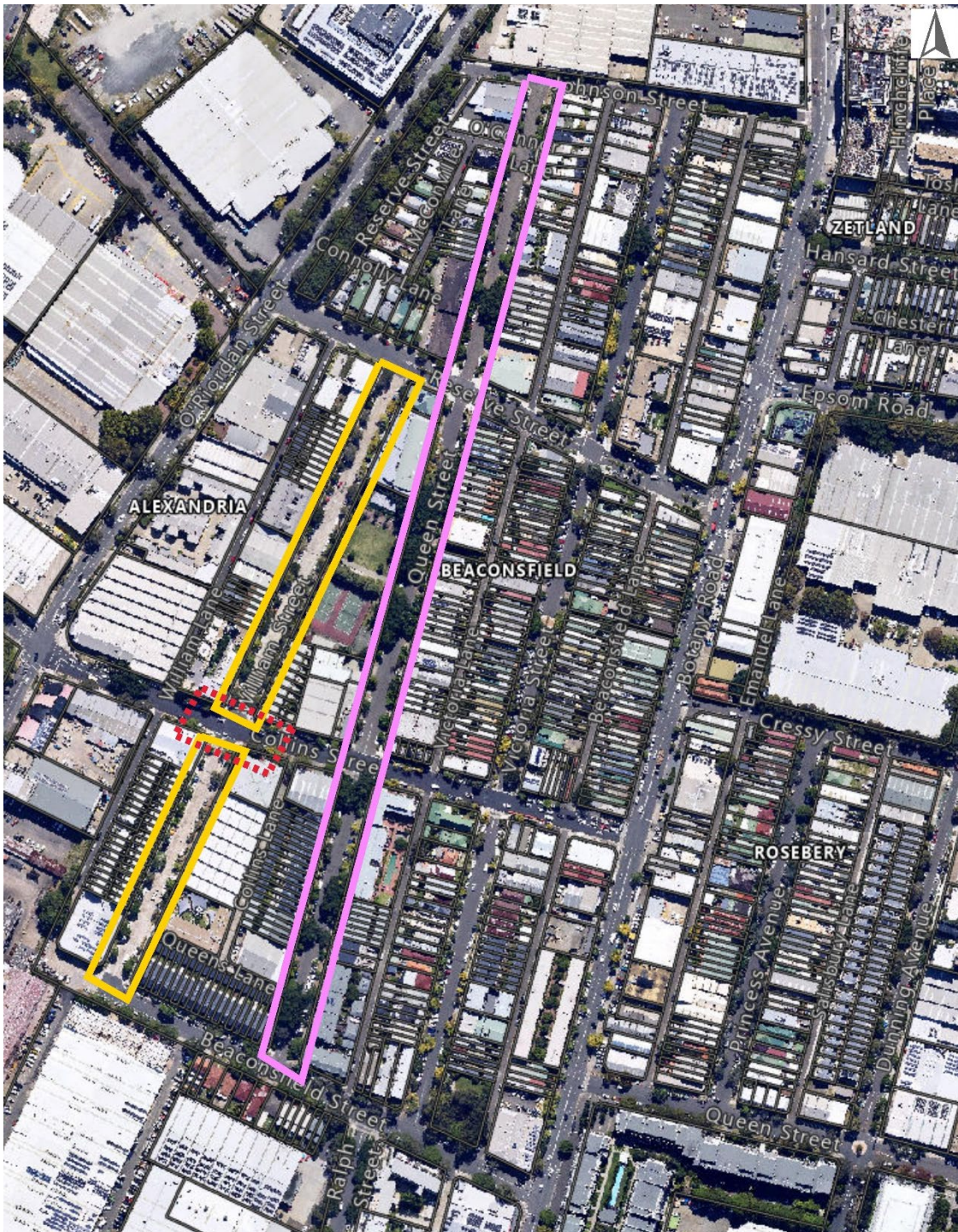


Attachment A

William and Queen Street Improvements Plans

Location Scope Plan



William and Collins Street – Pedestrian Crossing and CFT scope – Refer to A1



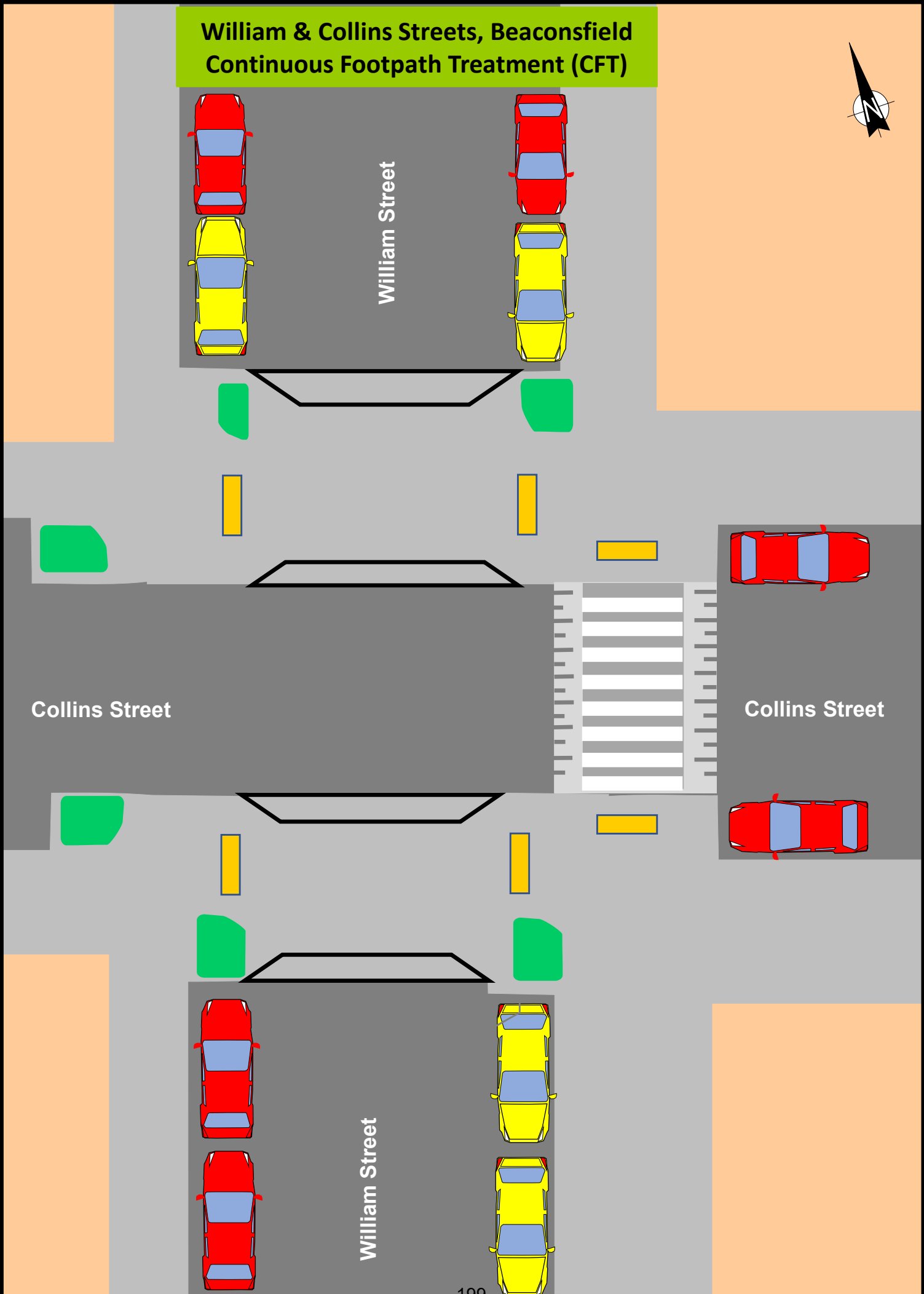
Queen Street Works Area – Refer to B1, B2 (Overall Plan) and 301-308 (Detailed Plans)



William Street Works Area – Refer to C1, C2 (Overall Plan) and 401-406 (Detailed Plans)

WILLIAM AND COLLINS PEDESTRIAN CROSSING AND CFT

**William & Collins Streets, Beaconsfield
Continuous Footpath Treatment (CFT)**

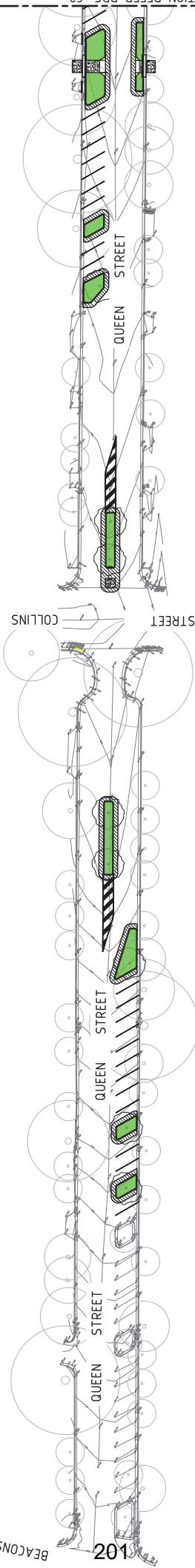


QUEEN STREET – OVERALL PLAN

BEACONSFIELD STREET

101

STREET COLLINS STREET COLLINS STREET



FOR CONTINUATION REFER DRG. C2.

Ver.	Rev.	Desc.
P1	14.09.23	DRAFT 100% DOCUMENTATION ISSUE
P2	14.09.23	DRAFT 100% DOCUMENTATION ISSUE

PROGRESS PRINT



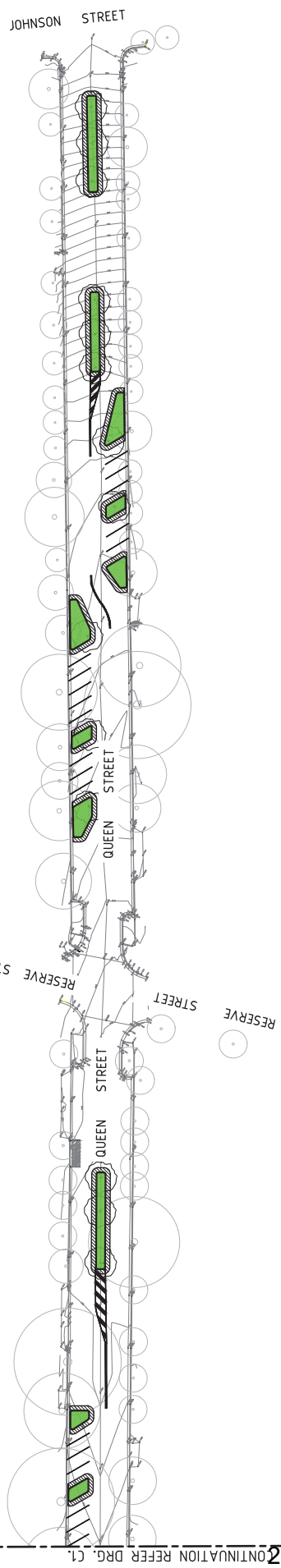
CLIENT
 QMC GROUP
 SUITE 208, 29 LEXINGTON DRIVE
 BELLA VISTA NSW 2163



INROAD PLANTING
 QUEEN STREET
 BEACONSFIELD

CIVIL WORKS PLAN - SHEET 1

Prepared	Verified	Approved	Date
Y.S. 21.06.23	J.C. 21.06.23	J.C. 21.06.23	JUNE 2023
Amendment	Drawing number	Job number	Scale @ A1
	C1	23-173	1:400



RESERVE STREET

QUEEN STREET

QUEEN STREET

JOHNSON STREET

Ver.	Rev.	Desc.
P1	14.09.23	DRAFT 100% DOCUMENTATION ISSUE
P2	14.09.23	DRAFT 100% DOCUMENTATION ISSUE

PROGRESS PRINT



CLIENT
 QMC GROUP
 SUITE 208, 29 LEXINGTON DRIVE
 BELLA VISTA NSW 2153



INROAD PLANTING
 QUEEN STREET
 BEACONSFIELD

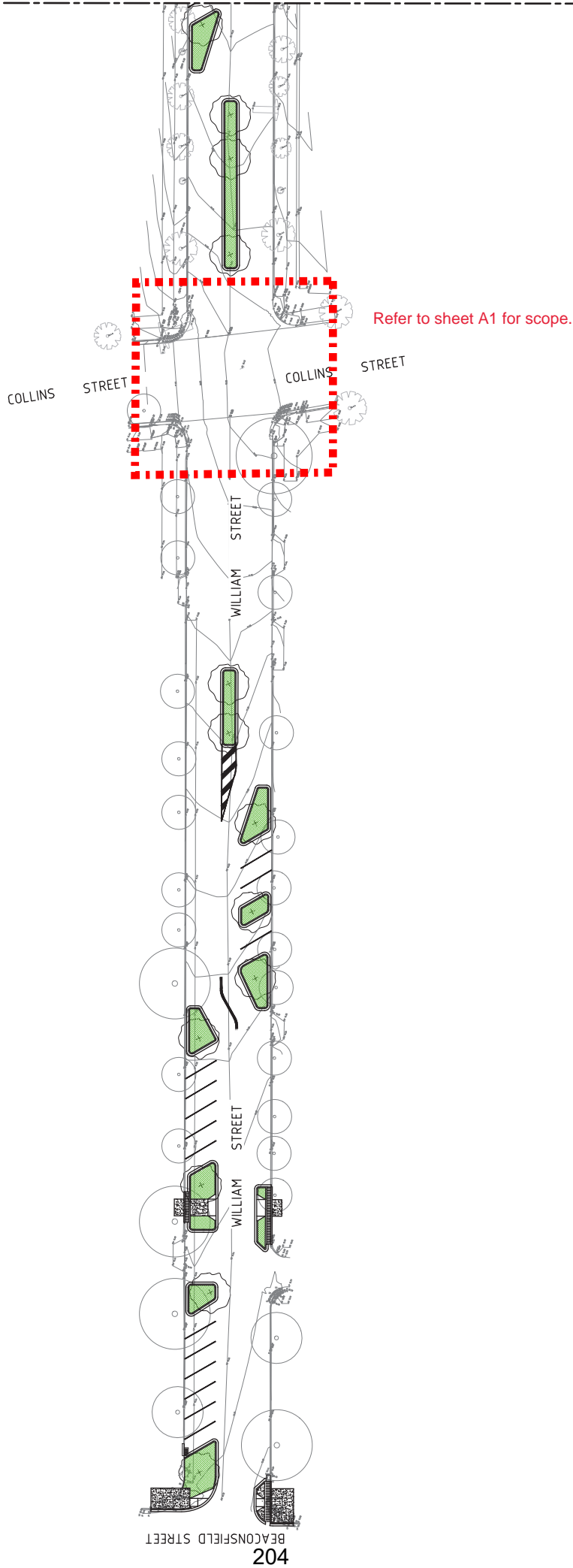
CIVIL WORKS PLAN - SHEET 2

Date: JUNE 2023
 Scale @ A1: 1:400
 Job number: 23-173

Approved J.C. 27.08.23	Verified	Prepared Y.S. 27.08.23
Drawing number	C2	Amendment P2

202 CONTINUATION REFER DRG. C1

WILLIAM STREET – OVERALL PLAN



204
BEACONSFIELD STREET

Rev.	Desc.
P1	14.09.23 DRAFT 100% DOCUMENTATION ISSUE
P2	14.09.23 DRAFT 100% DOCUMENTATION ISSUE
P3	14.09.23 DRAFT 100% DOCUMENTATION ISSUE

PROGRESS
PRINT



CLIENT
QMC GROUP
SUITE 208, 29 LEXINGTON DRIVE
BELLA VISTA NSW 2153

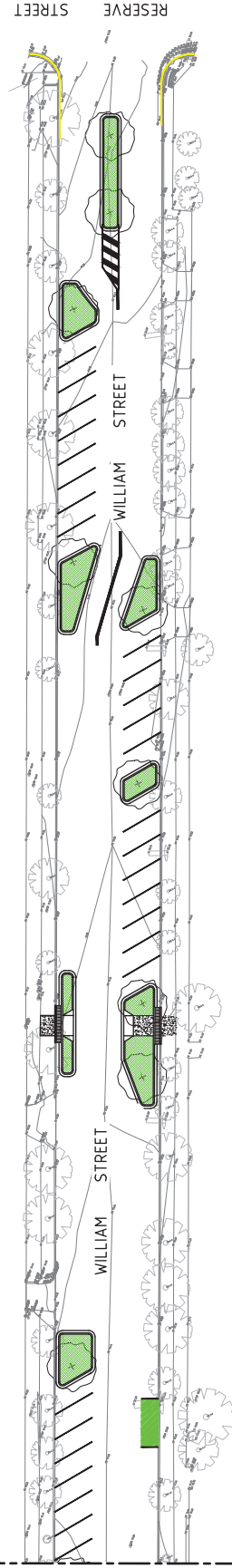


INROAD PLANTING
WILLIAM STREET
BEACONSFIELD
CIVIL WORKS PLAN
SHEET 1

Date JUNE 2023
Scale @ A1 1:300
Job number 23-171

Approved J.C. ZIANGZ
Drawing number C1

Prepared Y.S. ZIANGZ
Amendment P2



Ver.	Rev.	Size
		A1
		A2
		A3
		A4
		A5
		A6
		A7
		A8
		A9
		A10

**PROGRESS
PRINT**



CLIENT
 QMC GROUP
 SUITE 208, 29 LEXINGTON DRIVE
 BELLA VISTA NSW 2163



**INROAD PLANTING
 WILLIAM STREET
 BEACONSFIELD**

**CIVIL WORKS PLAN
 SHEET 2**

Date: JUNE 2023
 Scale @ A1: 1:300
 Job number: 23-171

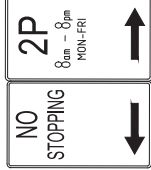
Approved: J.C. ZURKIN
 Verified: J.C. ZURKIN
 Drawing number: C2
 Prepared: Y.S. ZURKIN
 Amendment: P2

QUEEN STREET – DETAILED PLANS

STREET

BEACONSFIELD

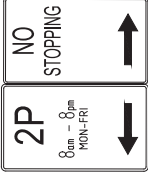
MAINTAIN EXISTING SIGNS AND POST.



MAINTAIN EXISTING SIGN AND POST.



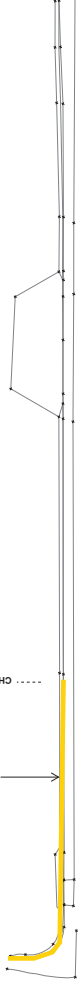
MAINTAIN EXISTING SIGNS AND POST.



QUEENS LANE

NEW NO STOPPING LINE APPROX 12M

CH 55.01



207

CH 10.0

CH 20.0

CH 30.0

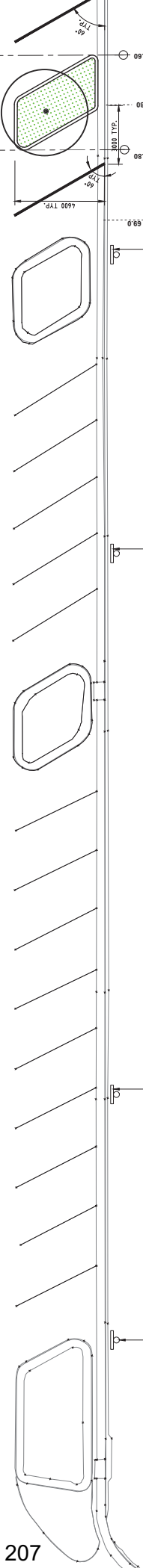
CH 40.0

CH 50.0

CH 60.0

CH 70.0

CH 80.0



MAINTAIN EXISTING SIGN



MAINTAIN EXISTING SIGN



MAINTAIN EXISTING SIGN



REMOVE EXISTING SIGNS.



REMOVE EXISTING SIGNS.

60° TYP.

60° TYP.

60° TYP.

CH 73.80

1600 TYP.

CH 75.80

1600 TYP.

CH 78.80

FOR CONTINUATION REFER DRG. C302.

REFERENCE DRAWINGS:
FOR STANDARD NOTES REFER TO DRG. NO. 001.

QUEEN STREET, BEACONSFIELD - INROAD PLANTING
LOCAL PEDESTRIAN CYCLING AND TRAFFIC CALMING COMMITTEE

SHEET 301



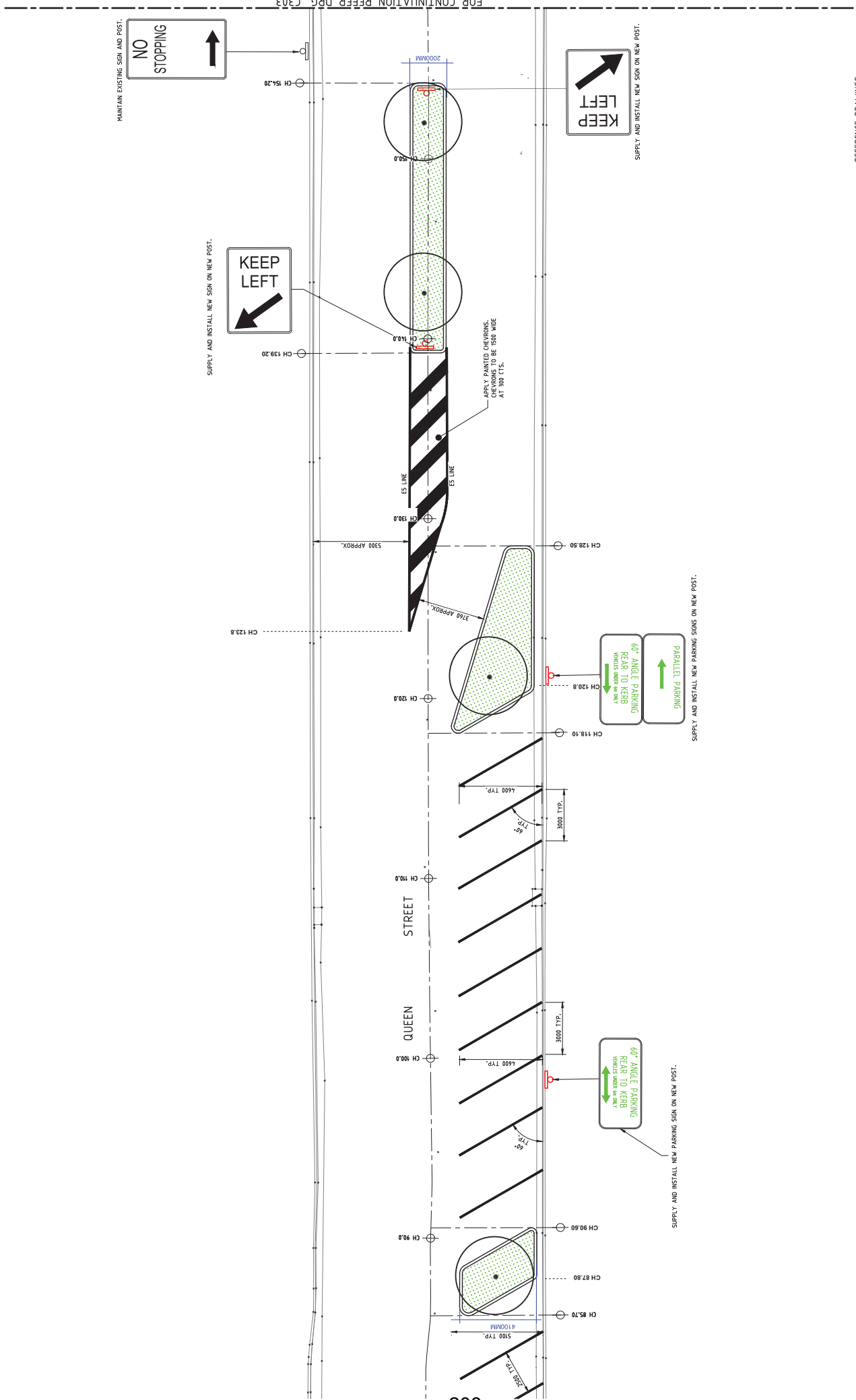
INROAD PLANTING
QUEEN STREET
BEACONSFIELD

LINE MARKING AND SIGNAGE
PLAN - SHEET 1

Date: SEPTEMBER 2023
Scale @ A1: 1:100
Job number: 23-173

C301

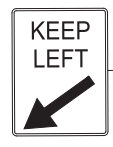
P5



MAINTAIN EXISTING SIGN AND POST.



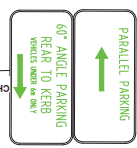
SUPPLY AND INSTALL NEW SIGN ON NEW POST.



SUPPLY AND INSTALL NEW SIGN ON NEW POST.



SUPPLY AND INSTALL NEW PARKING SIGNS ON NEW POST.

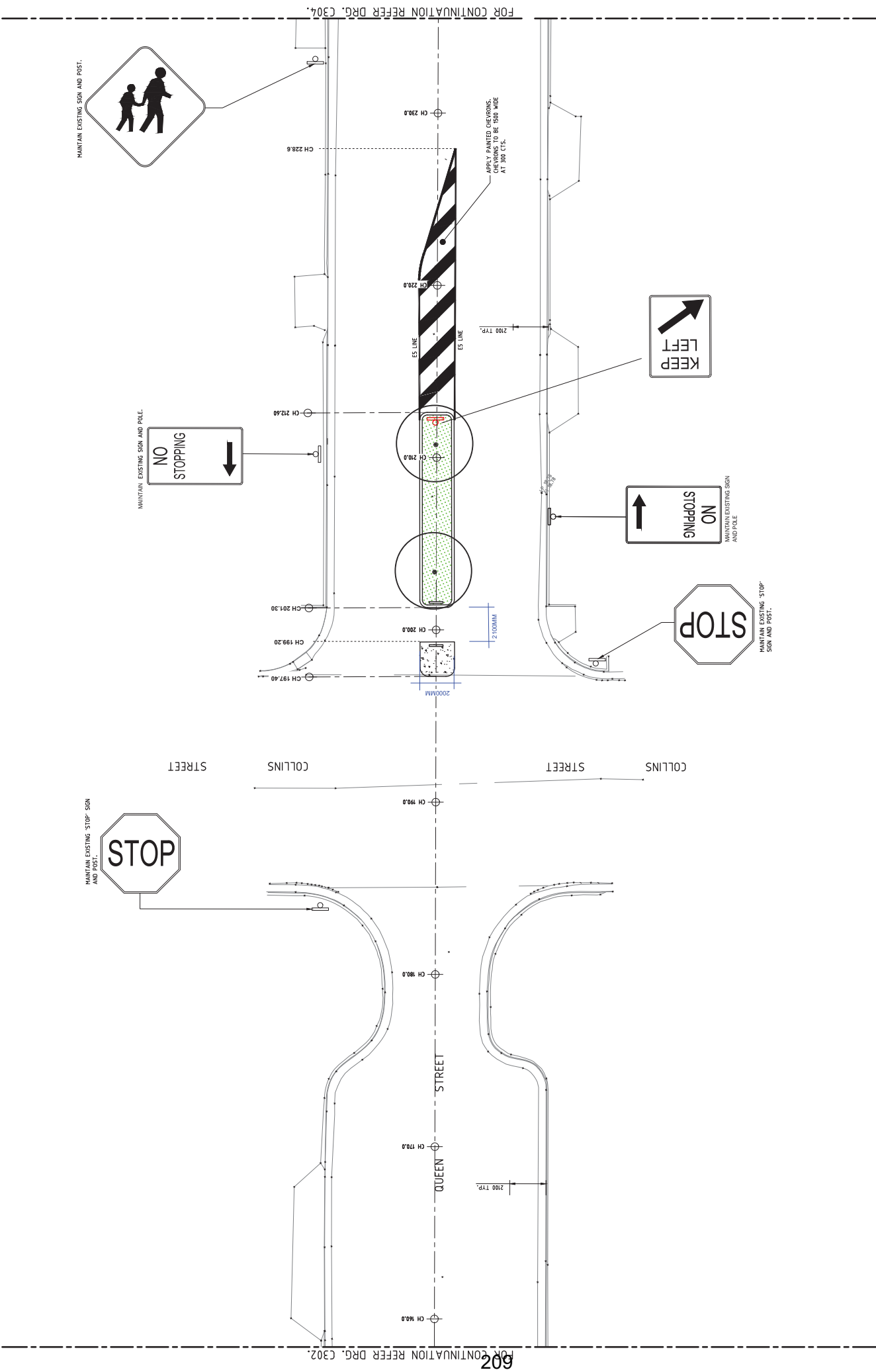


SUPPLY AND INSTALL NEW PARKING SIGN ON NEW POST.



REFERENCE DRAWINGS:
FOR STANDARD NOTES REFER TO DRG. NO. C001.

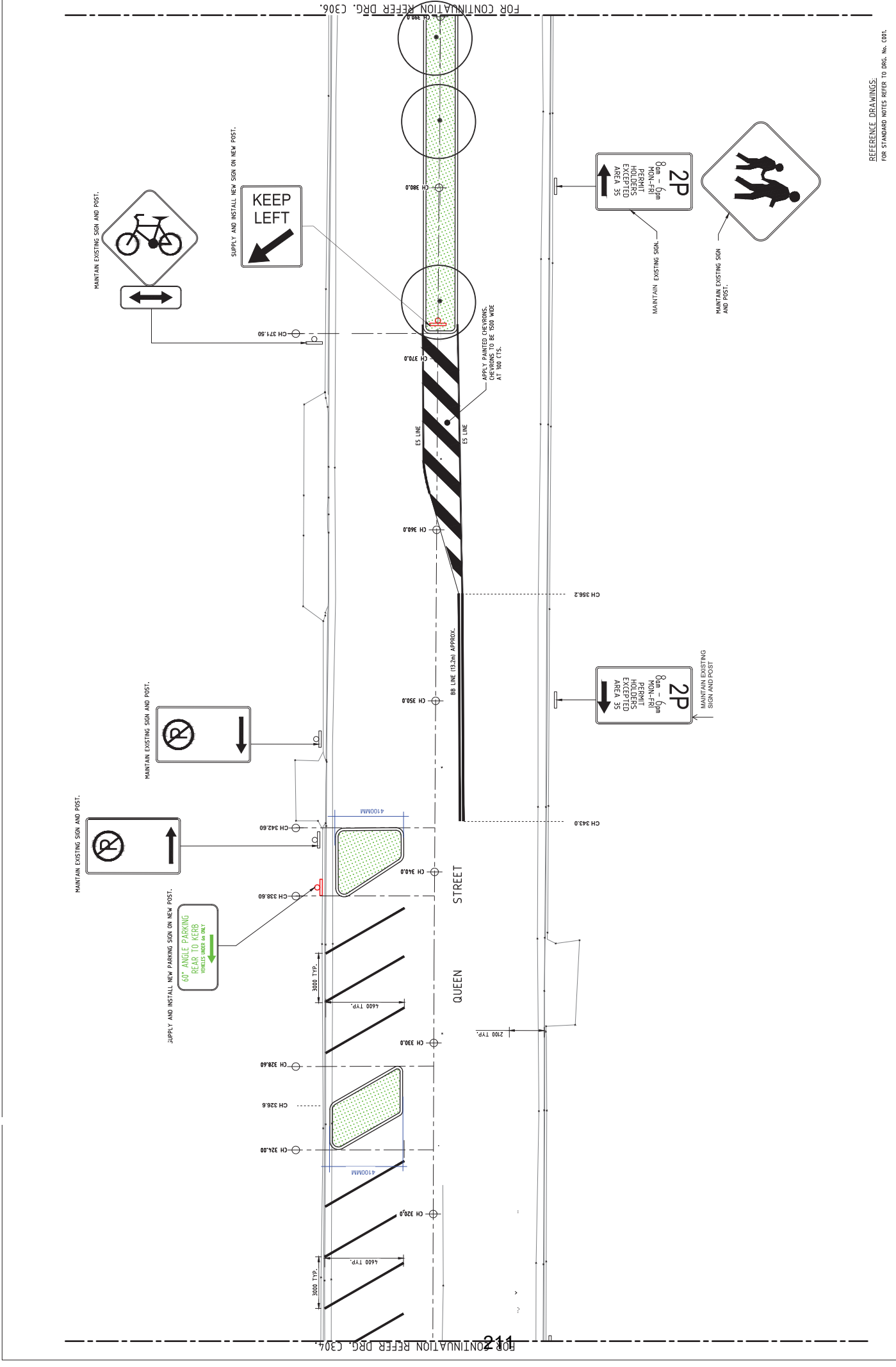
CLIENT QMC GROUP SUITE 208, 29 LEXINGTON DRIVE BELLA VISTA NSW 2153		INROAD PLANTING QUEEN STREET BEACONSFIELD		Approved J.C. 13.06.23	Verified Y.S. 03.06.23	Prepared Y.S. 03.06.23
		LINE MARKING AND SIGNAGE PLAN - SHEET 2		Date JUNE 2023	Scale @ A1 1:100	Drawing number C302



REFERENCE DRAWINGS:
FOR STANDARD NOTES REFER TO DRG. No. 001.

INROAD PLANTING QUEEN STREET BEACONSFIELD		Date: SEPTEMBER 2023 Scale @ A1: 1:100 Job number: 23-173 Drawing number: C303	Amendment: P5
LINE MARKING AND SIGNAGE PLAN - SHEET 3			
QUEEN STREET, BEACONSFIELD - INROAD PLANTING LOCAL PEDESTRIAN CYCLING AND TRAFFIC CALMING COMMITTEE SHEET 303			



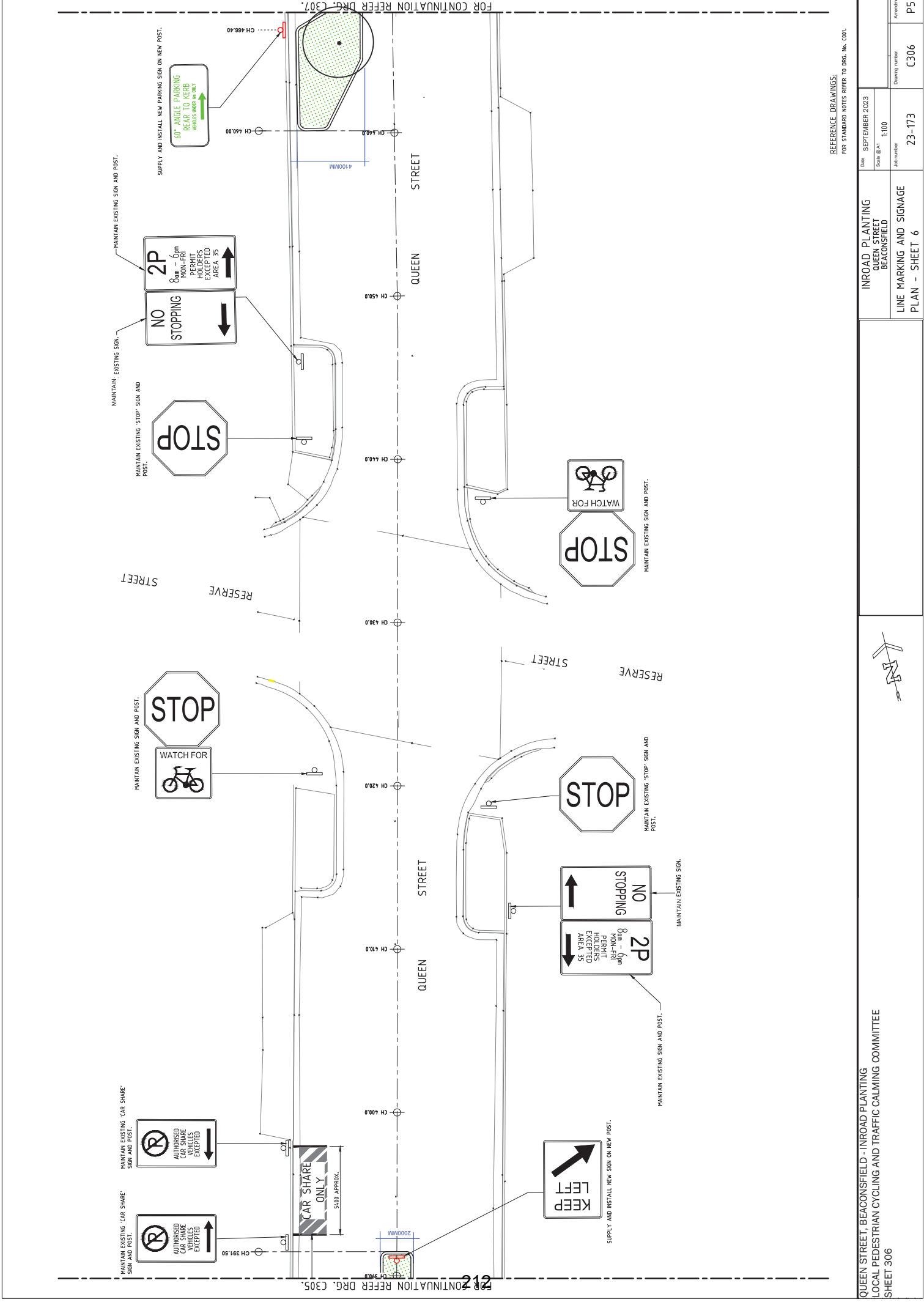


FOR CONTINUATION REFER DRG. C306.

FOR CONTINUATION REFER DRG. C304.

REFERENCE DRAWINGS:
FOR STANDARD NOTES REFER TO DRG. No. 001.

QUEEN STREET, BEACONSFIELD - INROAD PLANTING LOCAL PEDESTRIAN CYCLING AND TRAFFIC CALMING COMMITTEE SHEET 305	INROAD PLANTING QUEEN STREET BEACONSFIELD	Date: SEPTEMBER 2023 Scale: @ 1:100	Drawing number: C305	Amendment: P5
	LINE MARKING AND SIGNAGE PLAN - SHEET 5	Job number: 23-173		

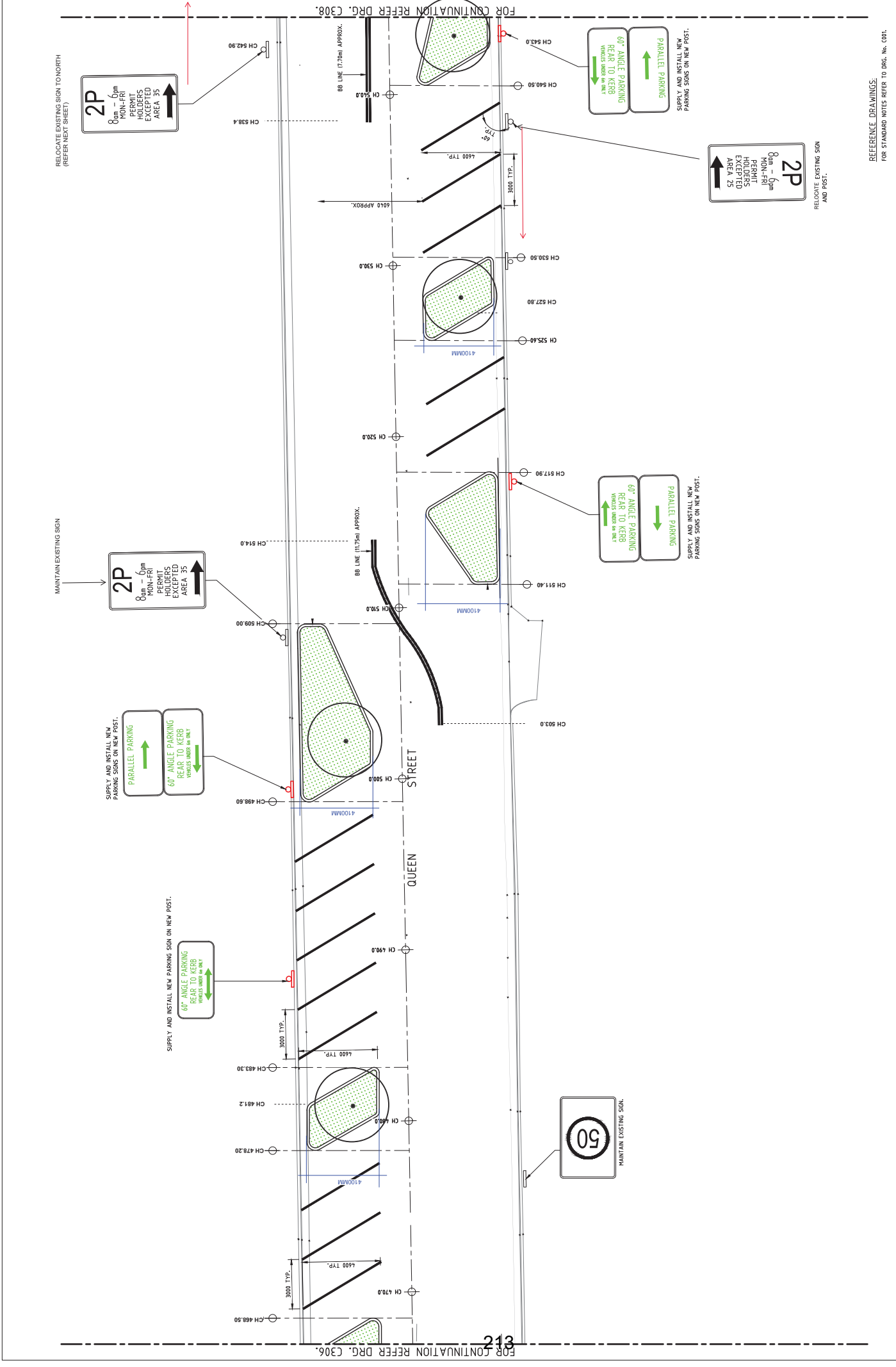


REFERENCE DRAWINGS:
 FOR STANDARD NOTES REFER TO DRG. No. 001.

INROAD PLANTING QUEEN STREET BEACONSFIELD	Date	SEPTEMBER 2023
	Scale @A1	1:100
LINE MARKING AND SIGNAGE PLAN - SHEET 6	Job number	23-173
	Drawing number	C306
		Amendment
		P5

QUEEN STREET, BEACONSFIELD - INROAD PLANTING
 LOCAL PEDESTRIAN CYCLING AND TRAFFIC CALMING COMMITTEE
 SHEET 306





FOR CONTINUATION REFER DRG. C306.

FOR CONTINUATION REFER DRG. C308.

RELOCATE EXISTING SIGN TONORTH
(REFER NEXT SHEET)

RELOCATE EXISTING SIGN
AND POST.

2P
0am - 6pm
MON-FRI
PERMIT
HOLDERS
EXCEPTED
AREA 35

2P
0am - 6pm
MON-FRI
PERMIT
HOLDERS
EXCEPTED
AREA 35

2P
0am - 6pm
MON-FRI
PERMIT
HOLDERS
EXCEPTED
AREA 25

PARALLEL PARKING
60° ANGLE PARKING
REAR TO KERB
VEHICLES UNDER 4M ONLY

60° ANGLE PARKING
REAR TO KERB
VEHICLES UNDER 4M ONLY

PARALLEL PARKING
60° ANGLE PARKING
REAR TO KERB
VEHICLES UNDER 4M ONLY

PARALLEL PARKING
60° ANGLE PARKING
REAR TO KERB
VEHICLES UNDER 4M ONLY

50
MANTAIN EXISTING SIGN.

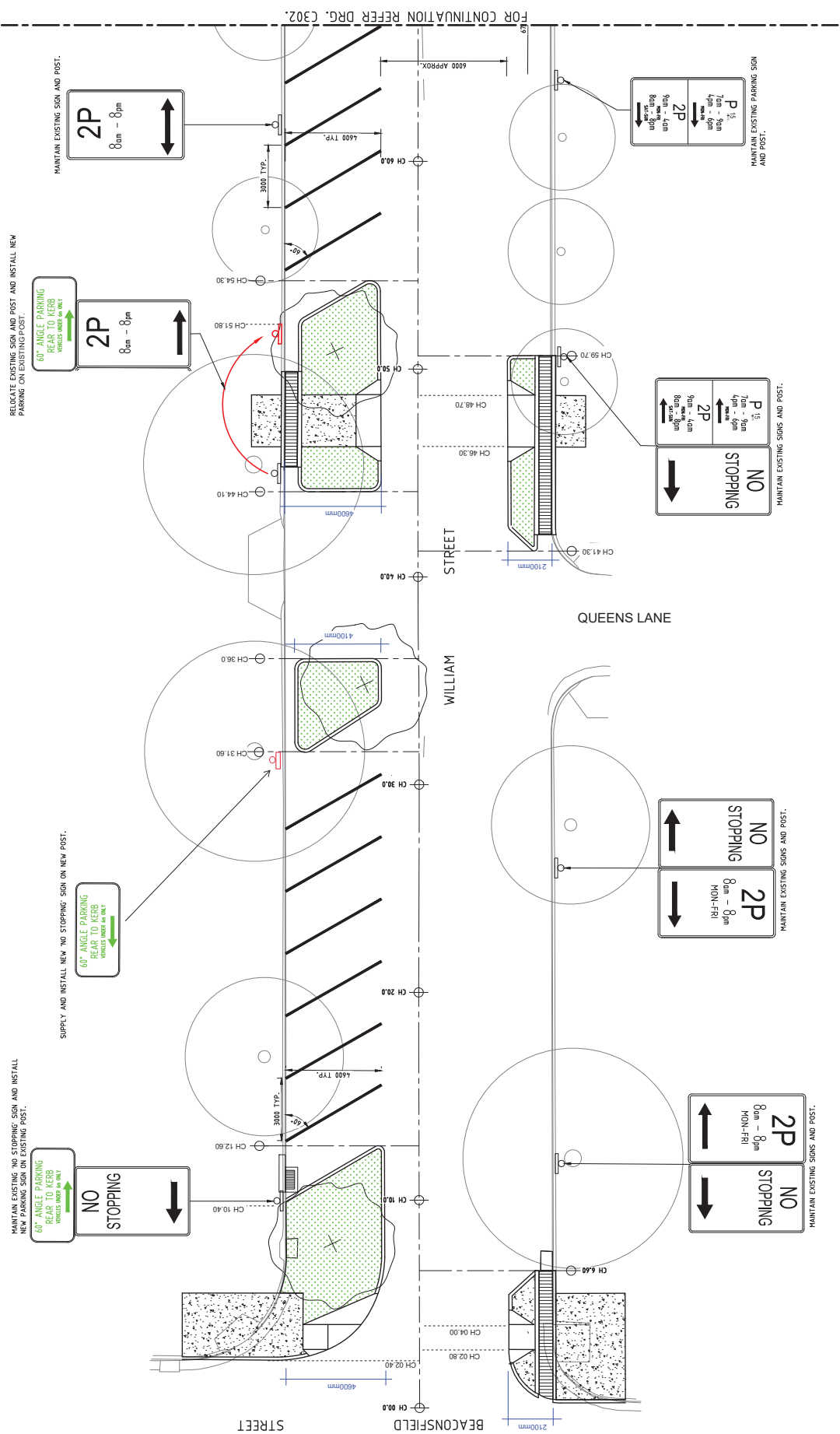
SUPPLY AND INSTALL NEW
PARKING SIGNS ON NEW POST.

RELOCATE EXISTING SIGN
AND POST.

REFERENCE DRAWINGS:
FOR STANDARD NOTES REFER TO DRG. No. C001.

INROAD PLANTING QUEEN STREET BEACONSFIELD		Date: SEPTEMBER 2023 Scale @ 1:100	Drawing number: 23-173	Amendment: C307	P5
QUEEN STREET, BEACONSFIELD - INROAD PLANTING LOCAL PEDESTRIAN CYCLING AND TRAFFIC CALMING COMMITTEE SHEET 307					
LINE MARKING AND SIGNAGE PLAN - SHEET 7					

WILLIAM STREET – DETAILED PLANS



FOR CONTINUATION REFER DRG. C302.

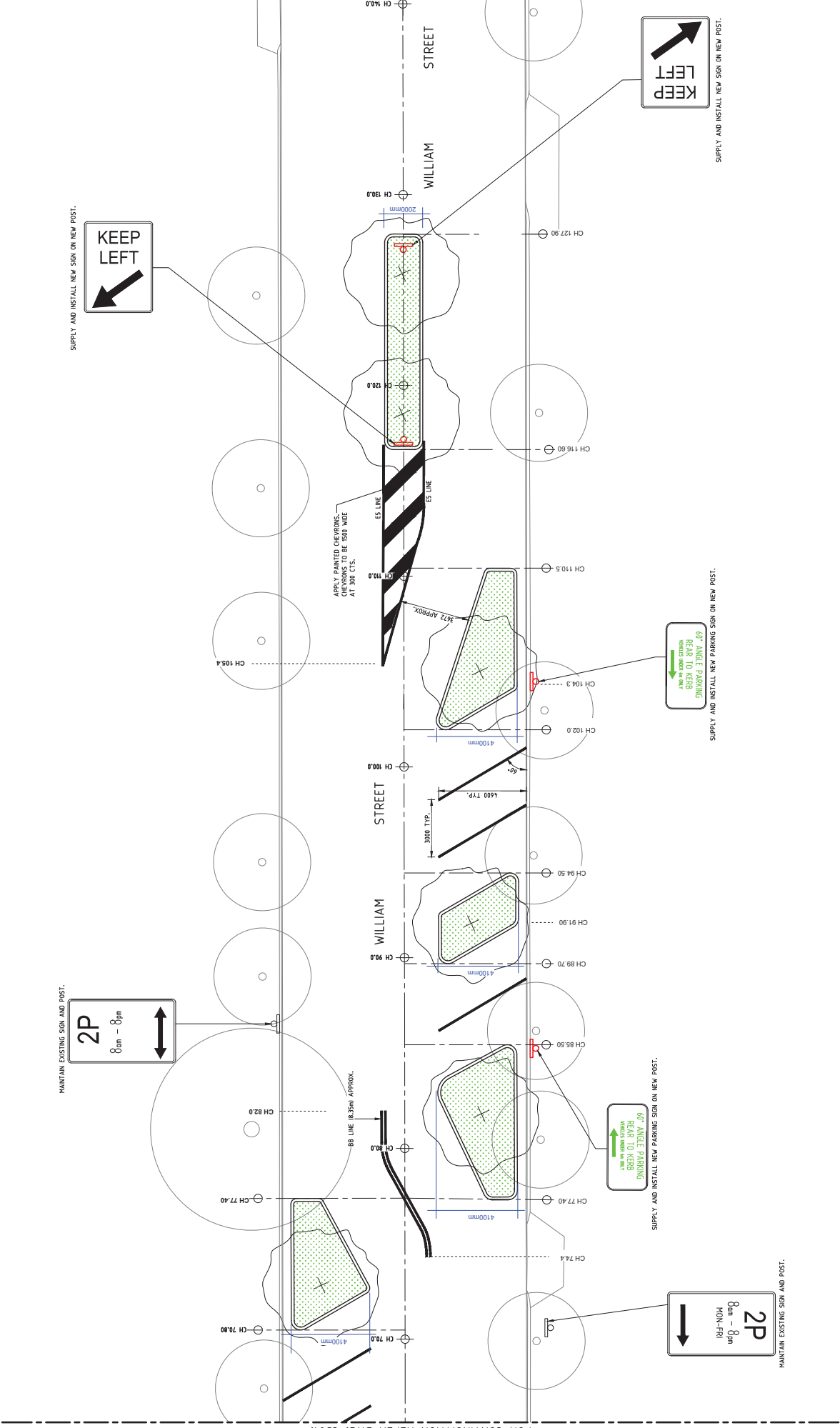
REFERENCE DRAWINGS:
FOR STANDARD NOTES REFER TO DRG. No. 001.

WILLIAM STREET - BEACONSFIELD - INROAD PLANTING LOCAL PEDESTRIAN CYCLING AND TRAFFIC CALMING COMMITTEE SHEET 401		Date: SEPTEMBER 2023	Scale @ A1: 1:100	Job number: 23-171	Drawing number: 401	Amendment: P5
		INROAD PLANTING WILLIAM STREET BEACONSFIELD				LINEMARKING AND SIGNAGE PLAN SHEET 1
		REFERENCE DRAWINGS: FOR STANDARD NOTES REFER TO DRG. No. 001.				

FOR CONTINUATION REFER DRG. C303.

FOR CONTINUATION REFER DRG. C301.

217



KEEP LEFT

SUPPLY AND INSTALL NEW SIGN ON NEW POST.

KEEP LEFT

SUPPLY AND INSTALL NEW SIGN ON NEW POST.

2P

8am - 8pm

MAINTAIN EXISTING SIGN AND POST.

60° ANGLE PARKING

REAR TO KEEP VEHICLES FROM AHEAD

SUPPLY AND INSTALL NEW PARKING SIGN ON NEW POST.

2P

8am - 8pm

MON-FRI

MAINTAIN EXISTING SIGN AND POST.

60° ANGLE PARKING

REAR TO KEEP VEHICLES FROM AHEAD

SUPPLY AND INSTALL NEW PARKING SIGN ON NEW POST.

REFERENCE DRAWINGS:
FOR STANDARD NOTES REFER TO DRG. NO. 001.

Date	SEPTEMBER 2023
Scale @	1:100
Job number	23-171
Drawing number	402
Amendment	P5

INROAD PLANTING
WILLIAM STREET
BEACONSFIELD

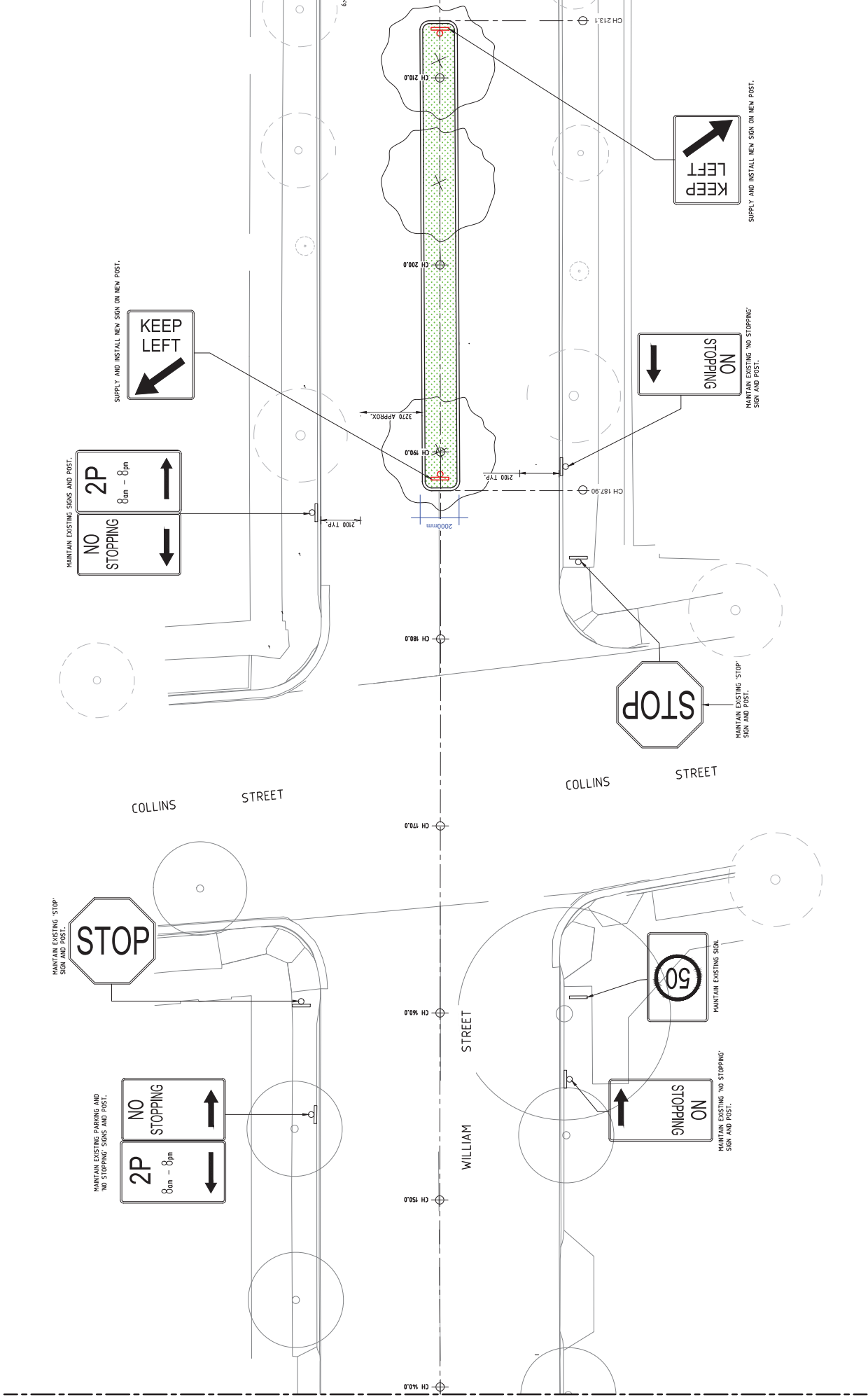
LINEMARKING AND SIGNAGE PLAN
SHEET 2

WILLIAM STREET, BEACONSFIELD - INROAD PLANTING
LOCAL PEDESTRIAN CYCLING AND TRAFFIC CALMING COMMITTEE
SHEET 402

FOR CONTINUATION REFER DRG. C304.

FOR CONTINUATION REFER DRG. C302.

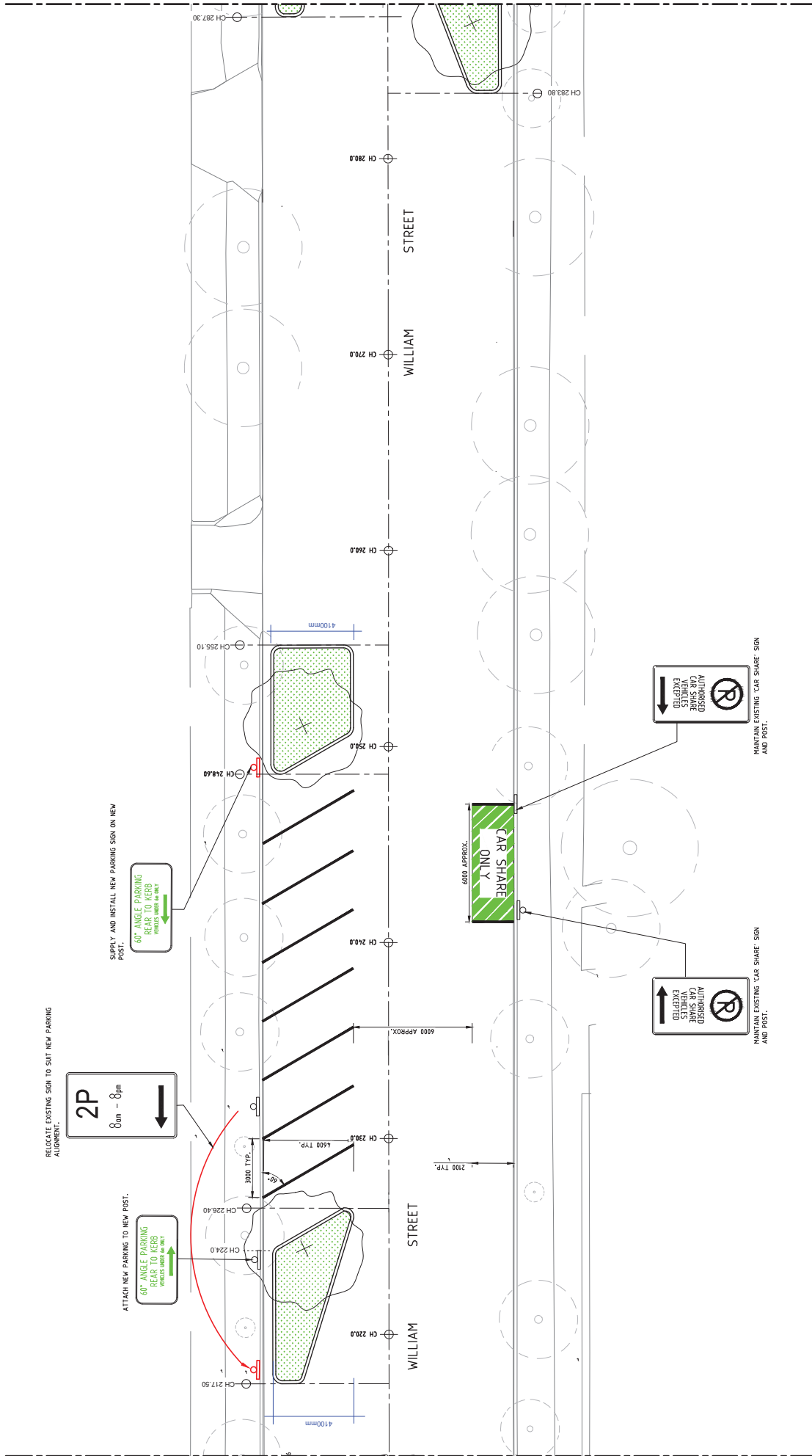
218



REFERENCE DRAWINGS:
FOR STANDARD NOTES REFER TO DRG. No. C01.

WILLIAM STREET, BEACONSFIELD - INROAD PLANTING LOCAL PEDESTRIAN CYCLING AND TRAFFIC CALMING COMMITTEE SHEET 403		INROAD PLANTING WILLIAM STREET BEACONSFIELD		LINEMARKING AND SIGNAGE PLAN SHEET 3	
Date	SEPTEMBER 2023	Scale @ A1	1:100	Job number	23-171
Amendment		Drawing number	403		P5





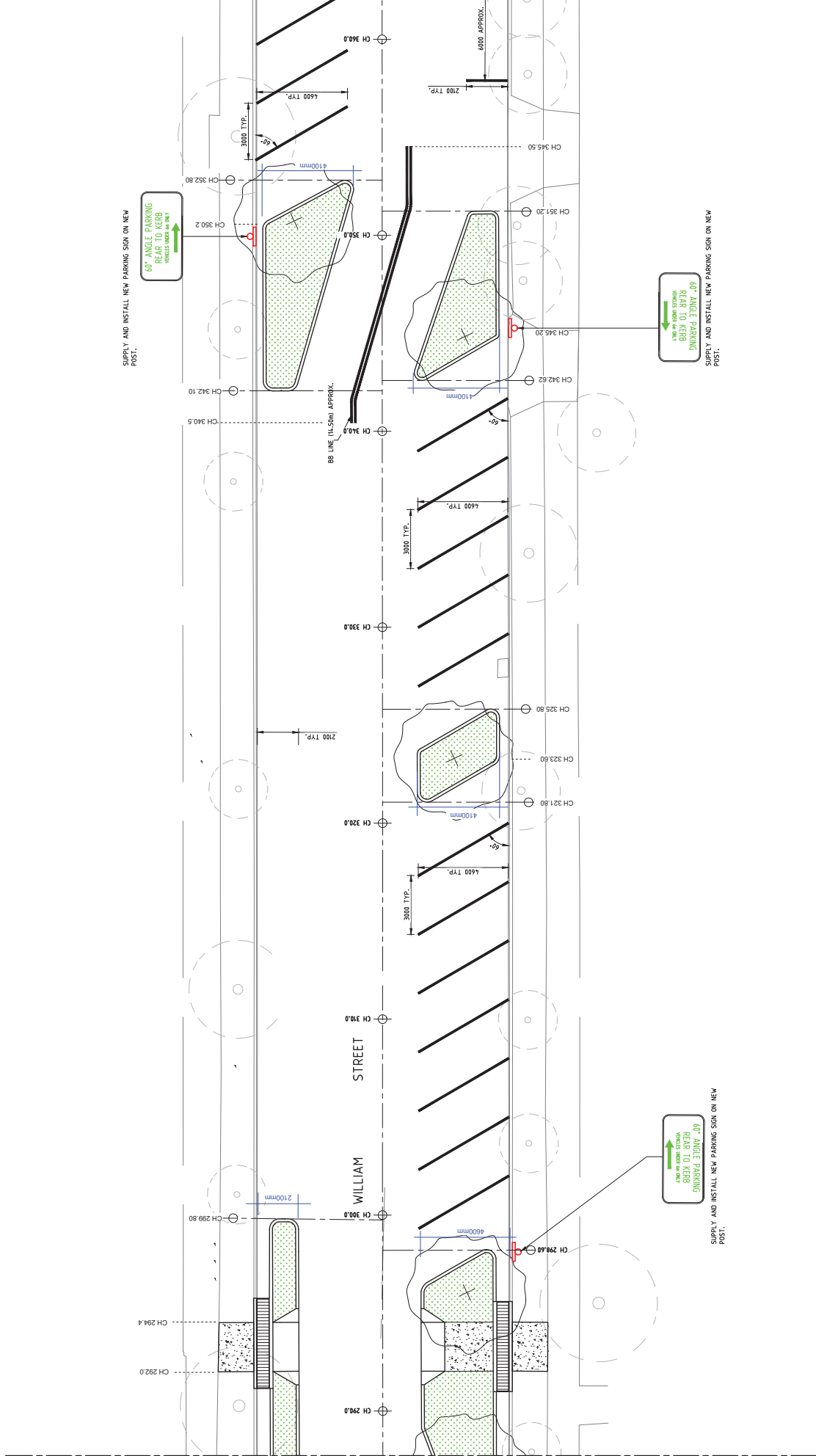
REFERENCE DRAWINGS:
FOR STANDARD NOTES REFER TO DRG. No. 001.

DATE: SEPTEMBER 2023	Scale @ A1: 1:100	Job number: 23-171	Drawing number: 404	Amendment: P5
INROAD PLANTING WILLIAM STREET BEACONSFIELD		LINEMARKING AND SIGNAGE PLAN SHEET 4		

WILLIAM STREET, BEACONSFIELD - INROAD PLANTING
LOCAL PEDESTRIAN CYCLING AND TRAFFIC CALMING COMMITTEE
SHEET 404

FOR CONTINUATION REFER DRG. C304.

FOR CONTINUATION REFER DRG. C306.

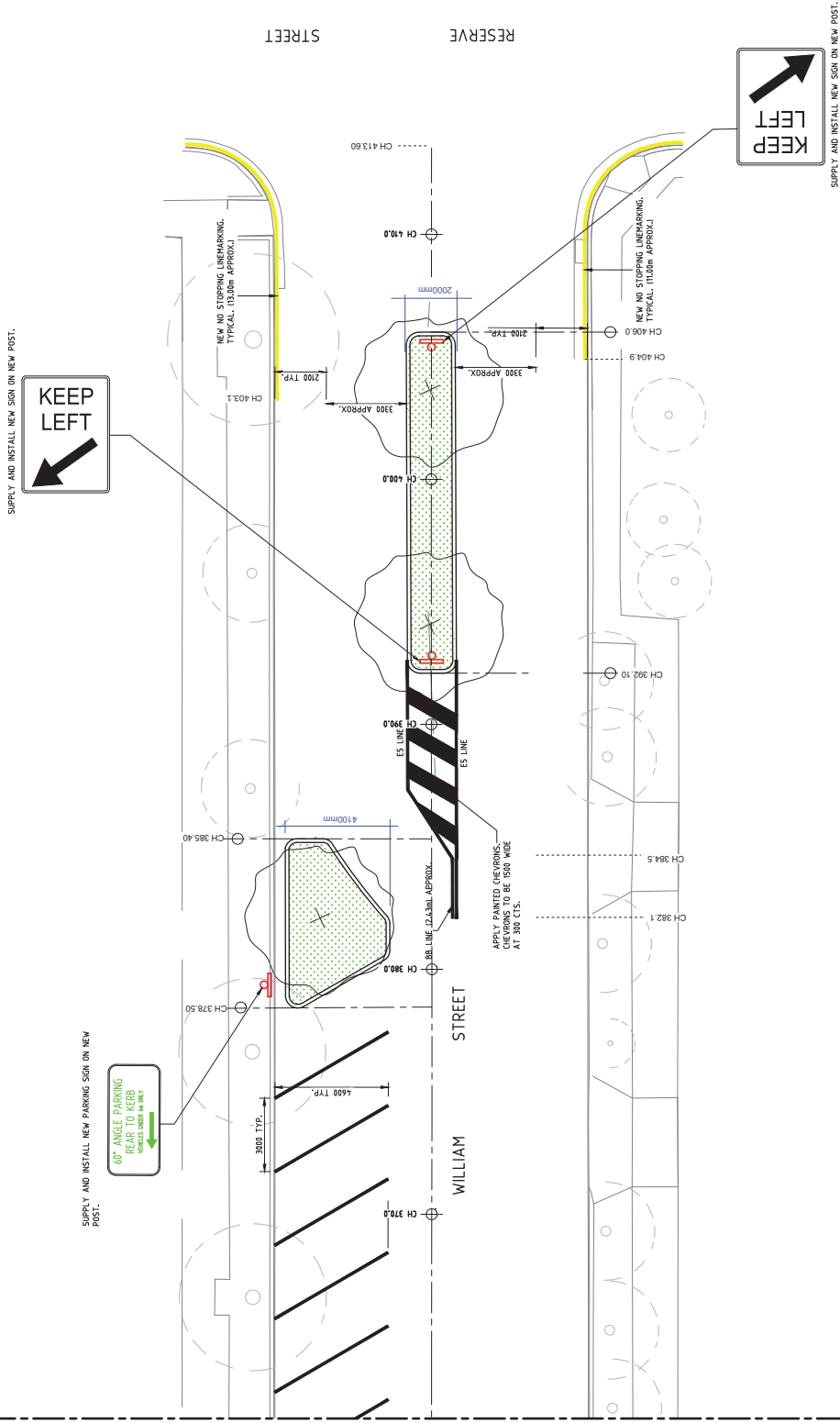


REFERENCE DRAWINGS:
FOR STANDARD NOTES REFER TO DRG. No. C01.

WILLIAM STREET, BEACONSFIELD - INROAD PLANTING LOCAL PEDESTRIAN CYCLING AND TRAFFIC CALMING COMMITTEE SHEET 405	Date: SEPTEMBER 2023 Scale: @ A1: 1:100	Drawing number: 405 Amendment: P5
	INROAD PLANTING WILLIAM STREET BEACONSFIELD LINEMARKING AND SIGNAGE PLAN SHEET 5	



FOR CONTINUATION REFER DRG. C305.



REFERENCE DRAWINGS:
FOR STANDARD NOTES REFER TO DRG. No. C01.

INROAD PLANTING WILLIAM STREET BEACONSFIELD	Date: SEPTEMBER 2023	Drawing number: 406	Job number: 23-171	Amendment: P5
	Scale @ A1: 1:100			
LINEMARKING AND SIGNAGE PLAN		SHEET 6		

WILLIAM STREET, BEACONSFIELD - INROAD PLANTING
LOCAL PEDESTRIAN CYCLING AND TRAFFIC CALMING COMMITTEE
SHEET 406